

ST. ANNE'S CATHOLIC HIGH SCHOOL FOR GIRLS
"Act Justly, Love Tenderly, Walk Humbly With Your God"



Curriculum Information Evening Year 7

2024 - 2025



Please ensure your Phones
are turned off or on silent



International Coalition
of Girls' Schools



ST. ANNE'S CATHOLIC HIGH SCHOOL FOR GIRLS

"Act Justly, Love Tenderly, Walk Humbly With Your God"

A Prayer and Welcome for New Students of St. Anne's



Dear Lord,

Please welcome and bless our new students, parents and carers to our Learning Family. They have chosen to be a part of the family of St. Anne's for many reasons: to express their creativity, to be part of a strong community, to learn and make progress in a safe environment.

Bless them with the gifts of the Holy Spirit, the gifts of wisdom, understanding, friendship and knowledge.

Bless our new students to St. Anne's so that over their time with us their words may, in the words of St. Francis, sow love where there is hatred, pardon where there is injury, faith where there is doubt, hope where there is despair, light where there is darkness and joy where there is sadness.

We ask this through Christ our Lord.

Amen

St. Anne, Pray for Us





Colleagues speaking this evening:

- ❖ **Mrs Sanders** – Associate Headteacher
- ❖ **Ms Szucs** – SENDCo
- ❖ **Mrs Cassidy-Jbiri** – Year 7 Transition Lead & Learning Coordinator
- ❖ **Mr Tamale** – Subject Leader for Religious Education
- ❖ **Mr Messenger** – Subject Leader for English & Drama
- ❖ **Mrs Grewal** – Subject Leader for Maths
- ❖ **Mr Thompson** – Subject Leader for Science
- ❖ **Ms Troiano** – CPSHE & RSE Coordinator
- ❖ **Mr Delaney** – Achievements
- ❖ **Ms Vevers** – Safeguarding
- ❖ **Ms Duarte** – Online Safety
- ❖ **Mrs Hanna** – Chair of Friends of St. Anne's PTA: FOSA and CEO/Director of Exodus Youth Worx UK

Key Staff for Year 7 St Kateri students:



Mr Delaney Assistant Headteacher

Mrs Cassidy-Jbiri Year 7 Transition and Learning Co-ordinator

Mrs Szucs SENDCo

Mrs Done Head of St. Kateri House



Useful Contacts

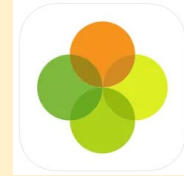
admin@st-annes.enfield.sch.uk

Mrs Cassidy-Jbiri: **Year 7 Transition Lead & Learning Co-ordinator**

Cassidy-JbiriE@st-annes.enfield.sch.uk



Communication Portal



Arbor Parent Portal and separate Student Portal
A free app - App Store and Google Play.

Use Arbor to:

- ❖ Receive messages, information, letters
- ❖ Take a look at your child's attendance information
- ❖ Edit contact details, e.g., your home address or phone number
- ❖ Register your child for an after-school club
- ❖ Real-time updates of achievement points and behaviour.
- ❖ Track your child's academic progress
- ❖ See your child's timetable
- ❖ Add new medical information about your child

SENDCo – MS SZUCS



Additional Support

We offer a range of support strategies depending on student need, including the following interventions and clubs:

- ❖ Breakfast, Lunchtime and After school Homework Club
- ❖ Morning Comprehension Club
- ❖ Handwriting practice
- ❖ Literacy Programme
- ❖ Fresh Start Phonics Programme
- ❖ Art Therapy
- ❖ Maths Intervention
- ❖ ASDAN Key skills curriculum
- ❖ External Agencies e.g., Educational Psychologist; Speech, Language and Communication Therapist; My Young Mind Enfield
- ❖ Emotional Literacy Mentors
- ❖ School Counsellor – Ms Opedo

ASSESSMENT AT KEY STAGE 3 – MRS SANDERS



Flightpaths

- ❖ Most expected flightpaths are determined using KS2 performance in Reading and Maths, CATs tests, Reading and Spelling tests together with national data and our school's past outcomes.
- ❖ A student's flightpath may vary in different subjects.
- ❖ Expected flightpaths are subject to annual review due to changes in the national database or their improved progress

Reports



- ❖ A student's knowledge, skills and understanding are assessed **over time** and not just the most recent assessment.
- ❖ **Progress** of the current WAG is tracked against expected target flightpaths.
- ❖ As a parent you will therefore be able to identify whether your daughter is "Working Above", "At" or "Below" her expected flightpath.

Advice on good study habits

MRS CASSIDY-JBIRI



Habits of highly effective students (see front of student planner).

- ❖ *Why revise?*
- ❖ *When to revise?*
- ❖ *Where to revise?*
- ❖ *How to revise?*
- ❖ *How to keep it going?*
- ❖ *How to make knowledge stick?*

Work out a study routine that works for you and stick to it (record in front of student planner).

Useful websites to support learning

(see front of student planner):



What can you do as a parent?



- ❖ Take an interest in your child's work. Ask to see her books and get her to talk about what is going well and what she needs to improve on.
- ❖ Encourage good study habits and make sure she has a quiet space to work.
- ❖ Encourage your child to respond to teacher feedback as part of her homework.
- ❖ Help your child to learn her spellings by testing her.
- ❖ Encourage her to write down any new vocabulary she encounters.
- ❖ Read challenging material together – fiction and non-fiction.
- ❖ Explore new genres and different types of non-fiction writing together.
- ❖ Encourage your child to use green pen to check over her work for mistakes before handing it in.
- ❖ Make sure your child comes to school with all the equipment she needs for her lessons.

RELIGIOUS EDUCATION - MR TAMALE



CURRICULUM

Our Religious Education Curriculum is based on the Bishops' Document 'Religious Education Directory for Catholic Schools, Academies and Colleges in England and Wales'.

THE KS3 COURSE – YEAR 7 MODULES

- ❖ Creation and covenant
- ❖ Prophecy and Promise.
- ❖ Galilee to Jerusalem
- ❖ Desert to Garden
- ❖ To the Ends of the Earth
- ❖ Dialogue and encounter

ASSESSMENTS

Students are assessed regularly, and for each module there will be:

- ❖ key skills assessments to check their progress
- ❖ timed end of module Extended writing skills test

GLOSSARIES

- ❖ Each student will be given a glossary of key words to help them access each module

HOW YOU CAN HELP YOUR DAUGHTER

- ❖ Help your daughter to break down her key words by learning 5 per week
- ❖ Challenge your daughter to use key words in sentences
- ❖ Ensure your daughter completes her homework



Religious Education

Year 7

Glossary

Name _____

Form _____





ENGLISH – MR MESSENGER

- ❖ Reading
- ❖ Writing
- ❖ Spoken English (Speaking and Listening)
- ❖ Spelling Punctuation and Grammar (SPaG)

READING

- ❖ Students will read a wide range of:
- ❖ Fiction and non-fiction texts
- ❖ Whole novels
- ❖ Short stories
- ❖ Poems
- ❖ Plays
- ❖ Students are encouraged to choose reading books independently for challenge, interest and enjoyment.

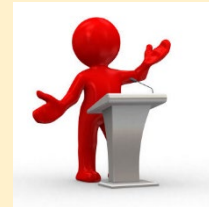


ST. ANNE'S CATHOLIC HIGH SCHOOL FOR GIRLS

"Act Justly, Love Tenderly, Walk Humbly With Your God"

WRITING

- ❖ A wide range of purposes and audiences,
- ❖ including:
 - ❖ Stories, scripts, poetry and other imaginative writing pieces.
 - ❖ Narrative and non-narrative texts (such as non-fiction texts)
 - ❖ Formal essays
 - ❖ Informal/formal letters
 - ❖ Arguments
 - ❖ Literary and rhetorical devices
 - ❖ Application of vocabulary and SPAG throughout
 - ❖ Writing Competitions/workshops



SPOKEN ENGLISH

- ❖ Standard English, formal/informal contexts
- ❖ Short speeches/ presentations
- ❖ Debates and structured discussions
- ❖ Perform poetry, monologues and drama scripts
- ❖ Debate Club



What can you do as a parent?



- ❖ Model reading at home, discuss what book you're reading and what ideas it has challenged you on.
- ❖ Ask your daughter questions about her book.
- ❖ Go to the library
- ❖ Encourage your daughter to choose more challenging reading books to enhance her reading and writing skills.
- ❖ Please see the KS3 and KS4 book lists on our website (in the English area)



MATHS – MRS GREWAL



CURRICULUM

Our aim is to provide your daughter with a high-quality mathematics education which will provide her with the skills to reason mathematically and articulate her understanding through problem solving.

Throughout the year, we cover various aspects of Maths which builds on the learning at Key Stage 2:

- ❖ Number - fractions, percentages, money, time, number sequences.
- ❖ Algebra – simplifying, substituting, forming equations..
- ❖ Shapes and Measure – area, perimeter, volume.
- ❖ Data Handling and Probability – charts, averages, chance of events happening

ASSESSMENTS



❖ Every Half Term

- ❖ Unit tests to monitor and track progress. Teacher may complete quizzes and mini tests to check learning as units are being taught.
- ❖ Each pupil will have, in their exercise books, a tracker sheet that shows them their progress and what to do to improve...

RESOURCES

Textbooks

- ❖ Activelearn textbooks

Online Resources

- ❖ Mathswatch
(www.mathswatchvle.com)
- ❖ Active Learn
(www.pearsonactivelearn.com)





HOW CAN YOU HELP?

- ❖ By making sure your daughter knows all her Times tables up to and including at least the 12 times table.
- ❖ Ensuring she brings the appropriate maths equipment for lessons – scientific calculator, protractor, pencil, ruler and rubber.
- ❖ Ensure your daughter completes all set homework when required, including the online homework once their teacher has shared the login information.
- ❖ Mathematics does require pupils to explain their reasoning in words so good literacy skills are essential. Please ensure they read regularly as good reading skills will help with their mathematical understanding.

SCIENCE – MR THOMPSON



CURRICULUM

- ❖ Working scientifically; planning, practical techniques and analysing results.
- ❖ Cells, reproduction and body systems
- ❖ Particles, atoms and elements.
- ❖ Forces, Light and Sound
- ❖ The Solar System
(independent learning project)



SCIENCE

- ❖ Formal Assessment once per term
- ❖ Topic keywords tests,
- ❖ Online practice tests
- ❖ End of topic mini assessments
- ❖ Taught in tutor groups for year 7 then set by ability at the start of year 8 onwards.



ST. ANNE'S CATHOLIC HIGH SCHOOL FOR GIRLS

"Act Justly, Love Tenderly, Walk Humbly With Your God"

SCIENCE

Extra curricular

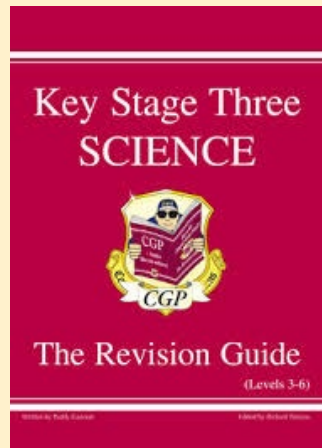
- ❖ Science club
- ❖ Visiting workshops
- ❖ Trips and visits



SCIENCE

How can you help?

- Online textbook (Kerboodle login)
- Resources on Teams
- BBC Bitesize KS3 science
- KS3 Science revision guide or workbook
- Free visits: local parks, science museum



CPSHE/RSE— MISS TROIANO



- ❖ **CPSHE** – Citizenship, Personal, Social, Health, Economic
- ❖ RSE: Relationship and Sex Education
- ❖ Lessons
- ❖ Termly Letters
- ❖ Parent Survey
- ❖ Student Survey
- ❖ Staff Survey

CPSHE

- ❖ Street Safety
- ❖ Positive Mental Health
- ❖ Student Skills
- ❖ Life around the World
- ❖ Justice
- ❖ Maintaining good physical health
- ❖ Discrimination and Prejudice
- ❖ Living in the Wider World
- ❖ Personal Safety
- ❖ Year reflection



RSE



- ❖ Staffing
- ❖ Always taught in line with the Catholic Ethos whilst ensuring students are educated in an appropriate way to allow them to make informed decisions.
- ❖ Students up to the age of 16 can be withdrawn from the topics within RSE that come under Sex Education specifically. After 16 students can make their own choices on this. It will be made clear on letters whether lessons are optional or not.

RSE

- ❖ Self-Esteem
- ❖ Healthy Friendships
- ❖ Puberty
- ❖ Dangers Online
- ❖ Everyone is Unique
- ❖ Family Relationships



HOW CAN YOU HELP?



- ❖ Termly lessons – discuss these with your Daughter prior to their lesson taking place. Be ready to discuss the topic with them afterwards, be open minded – they would have listened to a lot of opinions.
- ❖ Discussing more difficult topics with them will help them feel more confident in and after the lesson.
- ❖ Parent Survey – Let me know what you think, help me with ideas and future planning.
- ❖ Email: troianoh@st-annes.enfield.sch.uk

ACHIEVEMENTS – MR DELANEY



Attitudes to Learning

- ❖ Students enjoy being rewarded for their effort and achievements and we aim to ensure that all staff consistently recognise, praise and reward a student's effort, achievement and contributions both in class and towards the school community on a weekly basis.
- ❖ Praise at St. Anne's can be earned by the maintenance of good standards as well as particularly noteworthy achievements. The 'Achievement ladder' in classrooms enables students to reflect on their choices and help them identify personal strategies to succeed in lessons.

ST. ANNE'S CATHOLIC HIGH SCHOOL FOR GIRLS

"Act Justly, Love Tenderly, Walk Humbly With Your God"

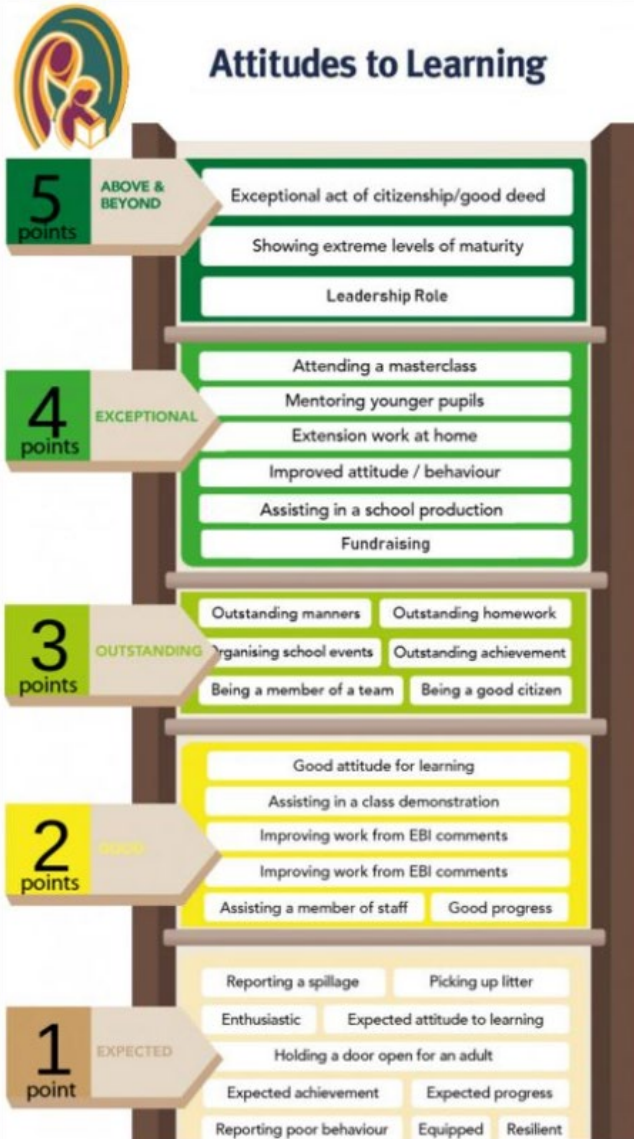


ACHIEVEMENTS

❖ The 'Achievement ladder' in classrooms enables students to reflect on their choices and help them identify personal strategies to succeed in lessons.

❖ The top students from each form who have received the greatest number of achievement house points at the end of month are celebrated during year group gatherings and awarded the form class of the month award.

Attitudes to Learning



RESPONDING TO GOOD BEHAVIOUR



- Recognising and rewarding positive conduct and good behaviour plays an important part in establishing and maintaining a culture of high expectations for all.
- A wide range of rewards are used in St. Anne's both in class and within our local community to recognise and promote positive behaviour and to support a positive climate for learning.
 - ❖ Achievement Points
 - ❖ Headteacher Award
 - ❖ Certificates
 - ❖ Positive Phone Calls home
 - ❖ Badges
 - ❖ Cinema Trips
 - ❖ and many more...

SAFEGUARDING LEAD AT ST. ANNE'S – MS VEVERS



- ❖ Our school provides a safe environment for your daughters to learn and grow.
- ❖ We have a range of pastoral members of staff who can support students experiencing difficulties in their wellbeing, as well as their learning.
- ❖ We encourage students to speak to adults when they are worried or experiencing difficulties
- ❖ We also have a digital reporting tool: SHARP which can be used by students
- ❖ If you are concerned about your child's wellbeing, please contact us

ONLINE SAFETY – MS DUARTE



One of the most upsetting experience for year 7s is to be expose to unkind comments on social media, that is one of the main reasons we teach online safety during the Computing lessons.

- ❖ Online safety is fundamentally about **educating** children and young people to use **technology safely**
- ❖ Online safety is less about restriction and more about the **education** of the **risks** as well as the **benefits** of the Internet so children can feel confident online
- ❖ Online safety is concerned with **supporting** young people to **develop safer online behaviours** both in and out of school

ST. ANNE'S CATHOLIC HIGH SCHOOL FOR GIRLS

"Act Justly, Love Tenderly, Walk Humbly With Your God"



- ❖ Popular social networking apps
- ❖ Most social media apps have **terms and conditions** with **age restriction of 13 in the UK**, including uploading videos to **YouTube**
- ❖ **WhatsApp** – The minimum age to use WhatsApp was 16, but from April 2024 the current **age restriction changed to 13**. This is particularly concerning given that WhatsApp is an end-to-end encrypted service, meaning that law enforcement and even the platform itself cannot see the messages shared on there.



Useful websites to help you to keep your child safe online

www.thinkuknow.co.uk

The Child Exploitation and Online Protection Centre (CEOP) has set up its own educational website which has been designed and written specifically for children, young people, teachers, parents and carers.

<https://www.thinkuknow.co.uk/parents>

As well as being involved in your child's life online, there are several tools you can use to help keep them safe, such as, parental controls and CEOP reporting pages.

www.childnet.com:

A non-profit organisation working directly with children, parents and teachers to ensure that the issues of online child protection are addressed.

www.childnet.com/resources/know-it-all-for-parents:

'**Know IT All for Parents**' is an interactive online safety guide for parents and carers produced by ChildNet International.



ST. ANNE'S CATHOLIC HIGH SCHOOL FOR GIRLS

"Act Justly, Love Tenderly, Walk Humbly With Your God"

FRIENDS OF ST. ANNE'S – MRS HANNA



- ❖ The Friends of St. Anne's (**FOSA**) is a group of parents, carers, staff and friends who are dedicated to raising funds for the school through a variety of social events throughout each year.
- ❖ Parental support is needed for students to benefit
- ❖ Getting involved with **FOSA** gives you a chance to meet and socialise with other parents and talk to staff in an informal setting.
- ❖ Welcome Pack with easy ways to support **FOSA**
- ❖ **Email Address:** FOSA@st-annes.enfield.sch.uk



An invitation to our first **FOSA Meeting** on **Monday 14 October 2024, 6.30pm** has been included in the Friends of St. Anne's Welcome pack given out this evening. Meetings are held at the Enfield Campus and parking is available.



ST. ANNE'S CATHOLIC HIGH SCHOOL FOR GIRLS

"Act Justly, Love Tenderly, Walk Humbly With Your God"

EXODUS YOUTH WORX UK – MRS HANNA



St. Anne's works closely with Exodus Youth Worx to support local families through a variety of ways including our Community Hubs, Youth Hub and Support Services.

Exodus run a Youth Hub twice a week in Edmonton, providing activities and a safe place for young people, which many students at St. Anne's take advantage of.

Please see below for their contact details

Registered Charity 1185444

www.exodusyouthworx.london

Email – tara.hanna@exodusyouthworx.london

Phone – 020 7993 6126

Facebook - [@exodusyouthworxuk](https://www.facebook.com/exodusyouthworxuk)

Instagram - [@exodusywuk](https://www.instagram.com/exodusywuk)

Twitter - [@exodusywuk](https://twitter.com/exodusywuk)

LinkedIn – [Exodus Youth Worx UK](https://www.linkedin.com/company/exodus-youth-worx-uk)

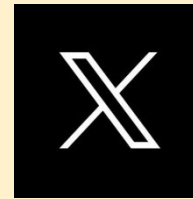


ST. ANNE'S CATHOLIC HIGH SCHOOL FOR GIRLS
"Act Justly, Love Tenderly, Walk Humbly With Your God"

THANK YOU FOR COMING



STAY CONNECTED WITH US ONLINE



St. Anne's
Twitter



St. Anne's
Instagram



St. Anne's
Facebook

www.st-annes.enfield.sch.uk

